

Clamp on welding tables



Your benefits at a glance:

1 Flexible throat depth

BESSEY TWV clamping elements for welding tables not only have infinitely adjustable throat depth, but are also available in three handle variants

2 100, 120 or 140 mm throat depth

On BESSEY TW clamping elements, you can choose among three handle variants and three throat-depth variants.

3 Heavy-duty, custom design

The TWM28 clamping element has a heat-resistant special pressure plate with sintered steel insert, which can be pivoted up to 35°. On the TW28GRS gripping arm variant the spindle is located on the outside, which enables – among other things – free access to the work area.

4 Perfect for railings

Whether the workpiece is round, oval or square, the TWWAD Vario table clamping attachments are ideally suited; this is because they can be infinitely adjusted to the workpiece being welded, from 60° internal to 60° external

5 Applying the quick clamp

Thanks to the TWA-STC adapter and the appropriate TWX extension, BESSEY toggle clamps with a horizontal base plate can also be rapidly applied to welding tables.

6 Diagonal und horizontal clamping

The tilting adaptor TW28AV used in conjunction with the extension TW28X allows angled or horizontal clamping in a range from -52 deg. to +52 deg.





Clamping element with variable throat depth TWV



Order number	Bolt \varnothing	Opening	Throat depth	Rail	Weight	PU	
	mm						
TWV16-20-15-2K	16	200	30-150	22 x 8.5	1.12	1	
TWV16-20-15K	16	200	30-150	22 x 8.5	1.04	1	
TWV16-20-15H	16	200	60-150	22 x 8.5	1.21	1	
TWV28-30-17-2K	28	300	40-175	28 x 11	2.22	1	
TWV28-30-17K	28	300	40-175	28 x 11	2.11	1	
TWV28-30-17H	28	300	110-175	28 x 11	2.48	1	

3D CAD data in the download area of the BESSEY website

- TWV16: Clamping force up to 2,500 N
TWV28: Clamping force up to 5,500 N
- TW16 + TW22: Clamping force up to 3,000 N
TW28: Clamping force up to 5,000 N
- Precise, individual clamping
- Tempered profile and sliding arm for sprung and elastic clamping
- Infinitely adjustable throat depth (at TWV)

Various design versions:

- High quality 2-component plastic handle and tommy bar with rounded ends – each with smooth-running trapezoidal threaded spindle and tool-free pressure plate replacement
- Lever handle with an indexing mechanism for controlled, fast and vibration-proof clamping
- TW22: Compatible with Barth and Beck lift tables

Clamping element with fixed throat depth TW



Order number	Bolt \varnothing	Opening	Throat depth	Rail	Weight	PU	
	mm						
TW16-20-10-2K	16	200	100	22 x 8.5	0.93	1	
TW16-20-10K	16	200	100	22 x 8.5	0.86	1	
TW16-20-10H	16	200	100	22 x 8.5	1.01	1	
NEW TW22-20-10-2K	22	200	100	22 x 8.5	1.00	5	
TW28-30-12-2K	28	300	120	28 x 11	1.68	1	
TW28-30-14-2K	28	300	140	28 x 11	1.70	1	
TW28-30-12K	28	300	120	28 x 11	1.62	1	
TW28-30-14K	28	300	140	28 x 11	1.65	1	
TW28-30-12H	28	300	120	28 x 11	2.07	1	
TW28-30-14H	28	300	140	28 x 11	2.08	1	

3D CAD data in the download area of the BESSEY website

Clamping element with gripping arm TW28GRS



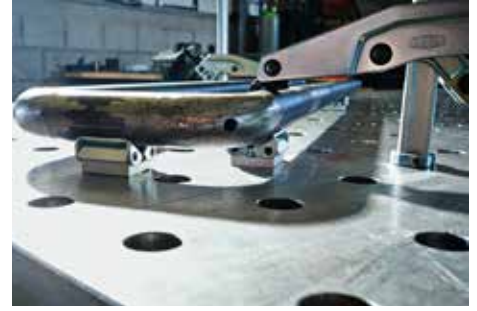
Order number	Bolt \varnothing	Opening	Throat depth	Rail	Weight	PU	
	mm						
TW28GRS30-12	28	300	120	28 x 11	2.26	1	

3D CAD data in the download area of the BESSEY website

- Clamping force up to 5,000 N
- The spindle is located on the outside for free access to the work area and to protect against welding spatter
- Special, sturdy V-grooved pressure plate, ideal even for clamping round or square workpieces
- Pivotal and infinitely adjustable in terms of height
- Particularly suited to clamping with the tightest of space constraints, in narrow openings as well as for short projections

You will find accessories on page 3

Clamp on welding tables



Clamping element with special pressure plate TWM28



Order number	Bolt Ø	Opening	Throat depth	Rail	Weight	PU	V3
		mm	mm	mm	kg	qty.	
TWM28-30-12	28	300	120	28 x 11	1.78	1	

3D CAD data in the download area of the BESSEY website

- Clamping force up to 6,500 N
- Precise, individual clamping
- Tempered profile and sliding arm for sprung and elastic clamping
- Tempered spindle – particularly sturdy and wear-resistant – for noticeably improved service life
- Long life due to heat-resistant pressure plate with sintered steel insert, which can be tilted up to 35°

Special pressure plate



Order number	Description	Suitable for	Weight		PU	V3
			kg	qty.		
3100736	standard	SLM, SGM, SGTM, STBM, STBVC, SGU, SLV, GSV, SPZ80K, TWM	0.23	50		
3102127	rigid	SPZ80K, TWM	0.23	1		
3100737	standard	STBS, STBU	0.26	1		
3101192	serrated	SLM, SGM, SGTM, STBM, STBVC, SGU, SLV, GSV, SPZ80K, TWM	0.18	1		
3101193	v-grooved	SLM, SGM, SGTM, STBM, STBVC, SGU, SLV, GSV, SPZ80K, TWM	0.27	1		

- Long service life thanks to heat-resistant special pressure plate with sintered steel insert

Various designs:

- Smooth faced (standard version)
- Rough faced for secure clamping on dirty surfaces
- V-groove face for round, oval and edged workpieces
- Rigid design with smooth surface

Vario table clamping attachment TWVAD (2 pcs./bag)



Order number	Bolt Ø	Angle	Jaw face width	Weight	PU	V3
			mm	kg	qty.	
TW16VAD	16	from 60° inner to 60° outer	45	0.38	1	
TW28VAD	28		45	0.57	1	
TWVAD	–		45	0.28	1	

3D CAD data in the download area of the BESSEY website

- Specifically adapted to round, oval and square workpieces
- Angle infinitely adjustable from 60° internal to 60° external

Various design versions:

- TW16VAD/TW28VAD – version with bolt – for rapidly aligning and fixing the workpiece to the welding table
- TWVAD – version without bolt – for variable movement on the welding table



Toggle clamp adapter TWA-STC



TW16A-STC



TW28A-STC



Order number	Bolt Ø	Suitable for	Thread	Weight	PU	
	mm			kg	qty.	V3
TW16A-STC	16	STC-HH STC-IHH	M5	0.19	1	
TW28A-STC	28	STC-VH	M6	0.28	1	

- Accessory for BESSEY STC toggle clamp with horizontal base plate
- With bolt – for use directly on the welding table
- Without bolt – for screwing to the extension TWX

3D CAD data in the download area of the BESSEY website

Extension TWX



TWX



TWX + TWA-STC + STC-HH



Order number	Bolt Ø	Suitable for	Adjusting range	Weight	PU	
	mm		mm	kg	qty.	V3
TW16X	16	TW16A-STC TW16VAD TWWAD	15–200	0.41	1	
TW28X	28	TW28A-STC TW28VAD TWWAD TW28AV	15–300	1.76	1	

- Accessory for BESSEY toggle clamp adapter TWA-STC, TWVAD and TW28AV
- Lowering of round workpieces is infinitely adjustable using the adjusting ring in the table

3D CAD data in the download area of the BESSEY website

Tilting adapter TW28AV



Order number	Bolt Ø	Opening	Suitable for	Weight	PU	
	mm	mm		kg	qty.	V3
TW28AV	28	160	TW28X	0.90	1	

- Clamping force up to 3,000 N
- Accessory for BESSEY extension TW28X
- Pivoting spindles with stepless adjustment from -52° to +52°
- Lockable trapezoidal nut for secure fastening of the workpiece
- High quality, 2-component plastic grip with long spindle

3D CAD data in the download area of the BESSEY website